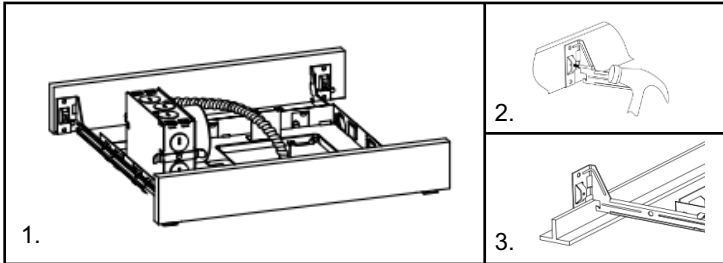


5" LED SQUARE RECESSED FIXTURE (120-277V)

HOUSING INSTALLATION

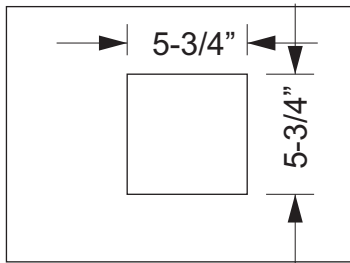
1. FASTENING FIXTURE TO CEILING

- Joist-type ceiling-extend bar hangers to fit between joists. Position fixture temporarily by hammering "Nail" into joists. (Drawing2) then secure permanently with nails Hanger should be level with bottom of joists.
- Suspended (T-bar) ceilings-extend bar hangers 1" past T-bars, then rest fixture on T-bars, Secure fixture to T-bars with wire (Drawing3)



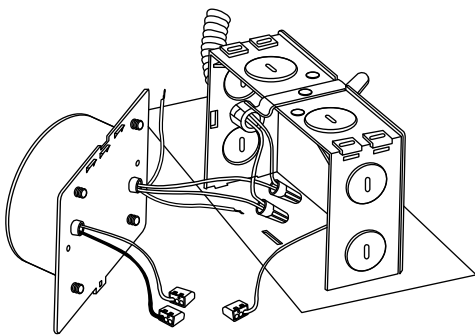
2. CUTTING A HOLE

Locate the center of proposed opening on your tile or ceiling material and mark it.



3. ELECTRICAL CONNECTION

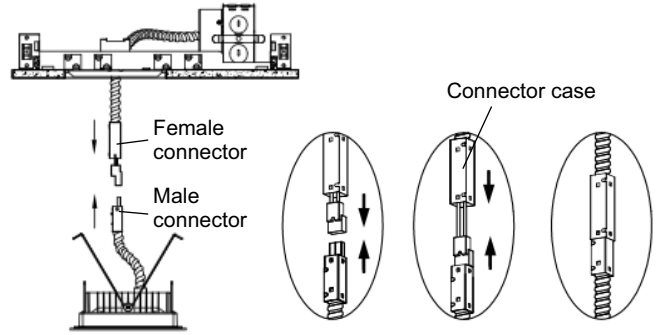
1. Remove spring latched junction box door and connect fixture wires to building wires in the following sequence White fixture wire to white neutral wire black fixture wire to (hot) black wire and green ground wire to bare ground wire
2. Use push-in type wire connectors supplied or white nuts
3. Replace junction box door



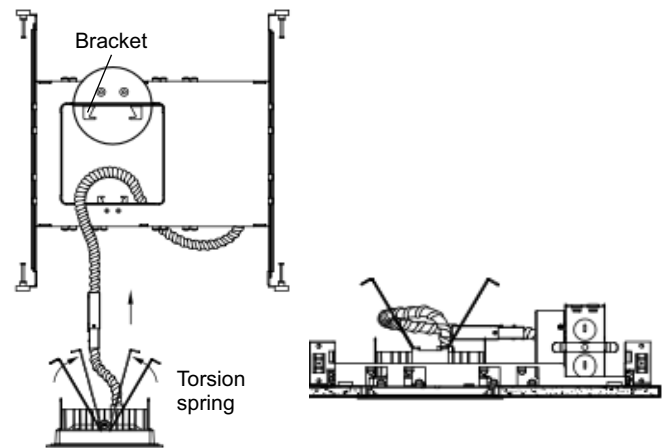
Push-In connector

TRIM INSTALLATION

1. Connect Female and male connector
2. Connect cases of female and male connector by pushing



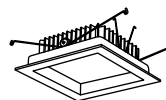
3. Secure square trim into housing by squeezing the ends of torsion springs together, inserting them into the brackets inside the housing, then releasing the springs.



LIST OF COMPATIBLE DIMMERS:

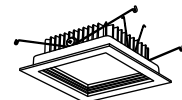
Mfr	Model #	Dimming Rate
COOPER	DLC03P	10 - 100%
Leviton	1A1505/1A3306	10 - 100%
Leviton	1C1505/1G1306	10 - 100%
Leviton	1K2306/6631/6633	10 - 100%
Lutron	CT-603PG/CT-600PR	10 - 100%
Lutron	DV-600PR/DV603PG	10 - 100%
Lutron	MACL-153M	10 - 100%

TRIMS



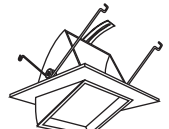
E520L1130W
(3000K CRI >90)

E520L1140W
(4000K CRI >90)



E524L1130W
(3000K CRI >90)

E524L1140W
(4000K CRI >90)



E523L1130W
(3000K CRI >90)

E523L1140W
(4000K CRI >90)